

# 4D Tera-M HIFU Machine





**Sincoheren**

# WHY?

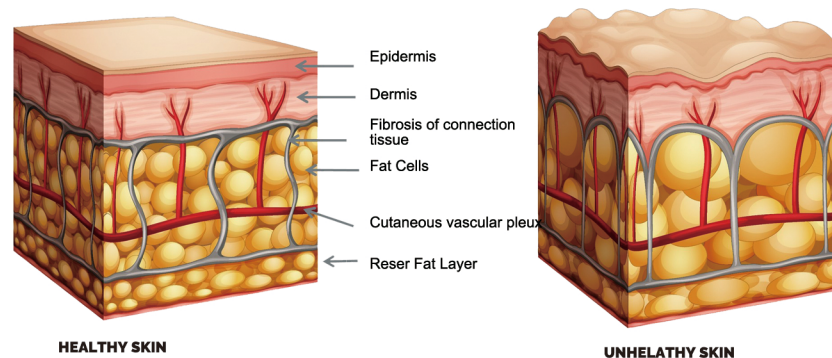
4D TERA-M PROVIDING A  
MULTI-FUNCTION NON-INVASIVE  
LIFTING AND CONTOURING  
TREATMENT BY COMBINING 4D LINE  
& PEN TECHNOLOGIES FOR TREAT  
FACE, NECK AREA AND BODY THAT

4D TERA-M PROVIDE  
FLEXIBILITY ON THE  
TREATMENT BY  
COMBINING 4D LINE AND  
PEN TECHNOLOGIES TO  
REACH EVERY POSSIBLE AREA IN  
IN A BODY.

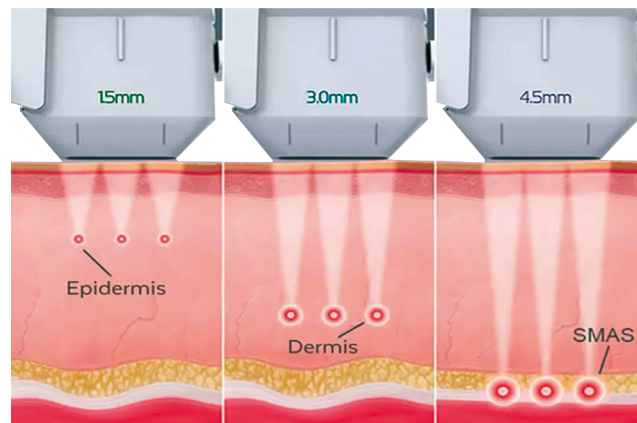


Website: [www.globalsincoheren.com](http://www.globalsincoheren.com)  
Tel: +86 152 1080 3188

Ultrasonic focusing reaches the SMAS layer with its specific high-energy focused ultrasound, improves the SMAS suspension, comprehensively solve the facial sagging and relaxation problems.



It accurately positions the ultrasonic power on the SMAS 4.5mm under skin, performing the best effect of shaping, pulling and compacting for muscle growth and traction; impacts on the collagen layer 3mm under skin, making the collagen restructured and newborn, solving the aging problems by recovering elasticity, skin whitening, wrinkle removing and pores shrinking.







Using the better penetrability of the mechanical radar wave, accurate transmitted 65 degree heat energy to SMAS layer (about 3.5mm-4.5mm) effectively stimulate that fibroblasts divide newborn cells at rate of 40 times per second, dissolving facial fat cells, tightening the skin contour, repair damaged tissue and stimulates collagen fiber regeneration, fast reach a face lift , compact Q elastic effect. At the same time, the accurate location of radar waves can proactively identify adipocytes, and reach the target depth through the unique probe friction beauty therapy, the patients will not feel pain.

In addition, Ulta can be used for tight body shaping by melting the fat layer ( depth of 10-20mm )

Removal  
Wrinkle

Ablate  
Adipocyte

Smooth  
Skin

V-Shape  
Face

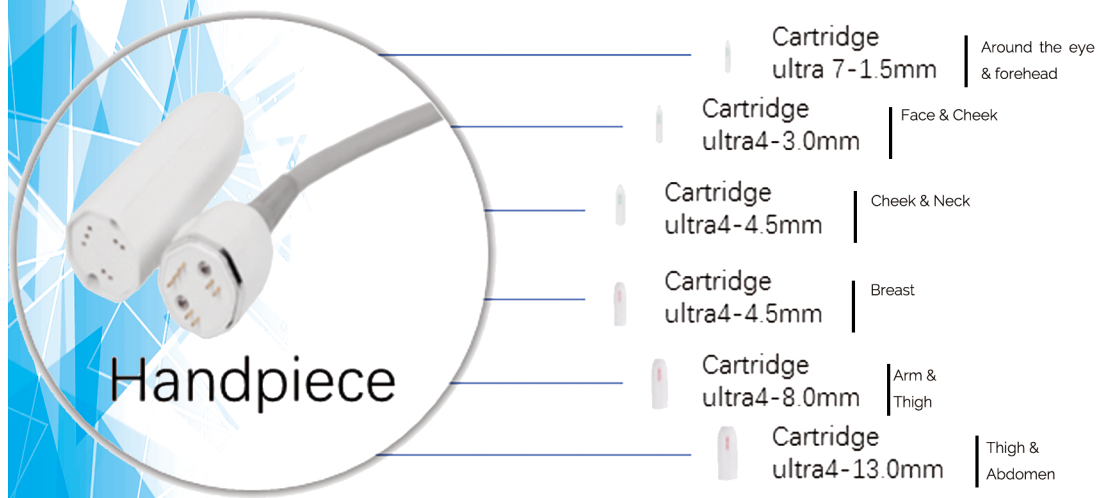


Model	SINCO HIFU	
Line Cartridge 	For Face (Standard)	4Mhz/4.5mm
		7Mhz/1.5,3.0mm
	For Body(Optional)	4Mhz/ 6.0, 8.0,10.0,13.0,16.0mm
	Specing	1.5~2.0mm
	Length	5.0~25.0mm
	Lifespan	20000 shots/probe
	Output	0.1-2.0J
Utra Applicator 	For Face (Standard)	7Mhz/1.5mm
		4Mhz/ 3.0,4.5mm
	For Breast(Optional)	4Mhz/4.5mm
	For Body(Optional)	4Mhz/ 8.0,13.0mm
	Lifespan	60000 shots/Probe
User Interface		15"Touch LCD
Weight		
Dimensions(W*D*H)		
Power Input		AC100-240V, 50/60Hz



Website: [www.globalsincoheren.com](http://www.globalsincoheren.com)  
 Tel: +86 152 1080 3188

# Pen-type



The pen-type treatment head has a smaller contact area, so it is better for the part of the face that is not completely flat and small treatment area. This treatment head can closely contact the skin through the sliding technique to a better transfer of the appropriate energy to the treatment area with a curved surface on face.

# Applications



- 1) REMOVING WRINKLES ON AROUND FOREHEAD, EYES, MOUTH, ETC
- 2) LIFTING AND TIGHTENING BOTH CHEEKS SKIN.
- 3) IMPROVING SKIN ELASTICITY AND SHAPING CONTOUR.
- 4) IMPROVING JAW LINE, REDUCING "MARIONETTE LINES".
- 5) TIGHTENING THE SKIN TISSUE ON FOREHEAD, LIFTING THE EYEBROWS LINES.
- 6) IMPROVING SKIN COMPLEXION, MAKING THE SKIN DELICATE AND BRIGHT.
- 7) REMOVING NECK WRINKLES, PROTECTING NECK AGING.
- 8) WEIGHT LOSS.



## Treatment Advantages

Radar carving: 1-9 points that are adjusting can be shot per second.

New radar technology cartridges are more suitable for some small areas, like areas around eyes, mouth and forehead.

Before

After



# General Advantages

01

PORTABLE DESIGN, EASY TO MOVE. MORE OPERATION LANGUAGES ARE OPTIONA. STABLE & PRECISE PEAK POWER BY INTEGRAL APPLICATOR AND DIGITAL ENGINE. WIDE RANGE OF CARTRIDGES (FACE TO BODY OPTIONAL).



WE OWN STRONG R&D TEAM, AFTER THOUSANDS TEST AND COUNT, ENSURE THE ENERGY OUTPUT IS STABLE AND ACCURATE, WITH DIFFERENT TREATMENT HEADS, PRECISE EFFECT ON DIFFERENT SKIN DEPTH, SAFE AND RELIABLE

02

03

THE MOST IMPORTANT SPARE PART - MOTOR. WE USE HIGH QUALITY MOTOR FOR HANDPIECE, WHICH ARE MADE IN JAPAN. NO DOWNTIME. SHOTS ARE POWERFUL AND UNIFORM.



HE TRADITIONAL WAY OF INCREASING HIFU OUTPUT ENERGY IS TO INCREASE THE ACTION TIME. OUR MACHINE UPGRADE THE TECHNOLOGY, BY ADJUSTING THE ULTRASONIC POWER TO CHANGE THE OUTPUT ENERGY, WHICH MEANS USING SHORTEST TIME TO ACHIEVE

04

# Pen Treatment Guide

## Step 1

4.5 mm

3500 Dots Shot



- ✓ Apply to move the applicator properly in the vector direction while considering of the density by line-drawing technique on lateral cheek of both sides of the face.
- 
- ✓ Apply such as single line-drawing in the vector.
- 
- ✓ Apply such as line-drawing or circle-drawing while bending patient's head back in case of under chin treatment

## Step 2

3.0 mm

1500 Dots Shot



- ✓ Apply rubbing mode by continuous shot on the face.
- ✓ Apply such as line-drawing or circle-drawing while bending head back in case of under chin treatment

Website: [www.globalsincoheren.com](http://www.globalsincoheren.com)

Tel: +86 152 1080 3188



# Pen Treatment Guide

## Step 3

1.5 mm

700 Dots Shot



- ✓ Apply line-drawing technique by pulling down in the under eye direction in case of periorbital wrinkle treatment.
- ✓ Apply line-drawing technique by pulling up eyebrow from eyehole in case of sagging eyebrow treatment.
- ✓ Apply line-drawing technique from upper eyebrow to the direction of scalp.
- ✓ Use with 1.5mm applicator for fine wrinkles and 3.0mm applicator for deep and thick wrinkles. In case of philtrum wrinkle treatment, divide in half for the treatment area because it's narrow.

## Step 4

1.5 mm

800 Dots Shot



- ✓ Apply rubbing mode by continuous shot.
- ✓ End of the pen treatment.

Website: [www.globalsincoheren.com](http://www.globalsincoheren.com)  
Tel: +86 152 1080 3188